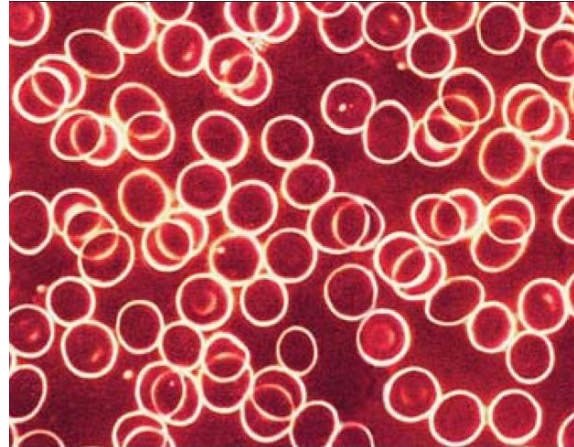
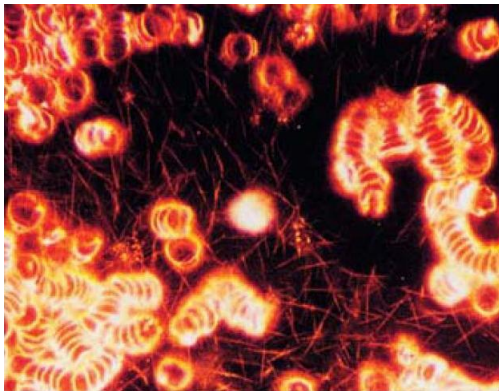


Examination of an effect of Somavedic Medic device in relationship to stress of electrosmog using analysis of blood cells in dark field; done by Mrs Dr. Mirjam Repa Reuss; Centro de Medicina Natural Canarias

Analysis of fresh blood in microscopy of the dark field is an admirably simple, although very testifying diagnostic procedure, which can document all main stresses causing body disorders.

(Picture proof: <https://www.licht-ins-dunkel.net/index.php?page=dunkelfeldmikroskopie>)



Changed blood
Sedimentation rate
Glued red-blood cells
Poor supply of oxygen
Protein threads

Healthy blood
Vital blood
Flexible red-blood cells without catenation and gluing

6.1 Content of case study

Number of participants

Five female patients after getting breast cancer were being examined in this case study.

Structure of the group

All patients were in comparable health condition

Age: 45 – 52 years

Constitution: Nonsmokers, common weight, no well-known accompanying illnesses, no illnesses of heart and circulatory system.

Diagnosis: Condition after Mamma Carcion with operative care, chemotherapy and radiation in period 3 to 4 years ago.

Current living situation: All patients work again, use mobile phones, WiFi/computer/internet, wireless telephone at home and a television with a modem.

6.2 Diagnosis

All patients show and describe the same range of issues:

Fatigue

Lack of productivity

Insomnia

Apathy

Issues with digestion

Susceptibility to infections

Microscopy of the dark field in preliminary examination shows dysregulation and sedimentation rate of red-blood cells in all patients.

6.3. Realization

Each patient before the „therapy of Somavedic Medic device“ was examined by method of microscopy of the dark field on an empty stomach in the morning

In the course of following four days each patient was invited for examination/study. During these days, every morning at 9 o'clock each patient has had their blood taken on an empty stomach and also undergone an analysis of microscopy of the dark field.

After initial takings of blood, patients rested for 90 minutes, while to their right and left there was one Somavedic Medic device. After 90 minutes another taking of blood was done and also an analysis of microscopy of the dark field.

Patient 1 – 52 years

Initial examination 1

Initial examination 2

After 90 minutes treatment with Somavedic Medic device

Patient 2 – 45 years

Initial examination

After 90 minutes treatment with Somavedic Medic device

Patient 3 – 51 years

Initial examination

After 90 minutes treatment with Somavedic Medic device

Patient 4 – 47 years

Initial examination

After 90 minutes treatment with Somavedic Medic device

Patient 5 – 48 years

Initial examination

After 90 minutes treatment with Somavedic Medic device

6.4 Results – summary

All patients during initial examination showed sedimentation of erythrocytes of different stages and malfunction of regulation. After the therapy of Somavedic Medic device, each patient showed a significant improvement of sedimentation. All patients subjectively feel rested and fit.

7. Somavedic Medic awarded with IGEF seal

Results of the study done by biophysical testing and research laboratory IGEF confirm that using Somavedic Medic when exposed to harmful high frequency electromagnetic radiation, electrosmog and geopathic zones lead to a provable improvement of heart rate variability. That has a positive effect on heart circulatory system and decreases expenses of vegetative nervous system for maintaining inner balance.

Positive results were also shown by testing of the effect of Somavedic Medic in relationship to stress of electrosmog using analysis of blood cells in the dark field; done by Mrs Dr. Mirjam Repa Reuss; Centro de Medicina Natural Canarias.

Because of this Somavedic Medic is also suitable as a protective measure when exposed to high frequency electromagnetic radiation, electrosmog and geopathic zones. However, using Somavedic Medic in case of having a disease does not replace medical care.

Somavedic Medic device is awarded with IGEF seal based on license agreement with company Internationale Gesellschaft für Elektrosmog-Forschung IGEF, under which conditions of using IGEF seal adheres to.

Dipl.-BW Wulf-Dietrich Rose
IGEF Certification Centre